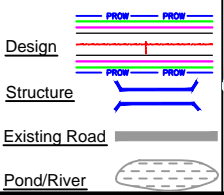
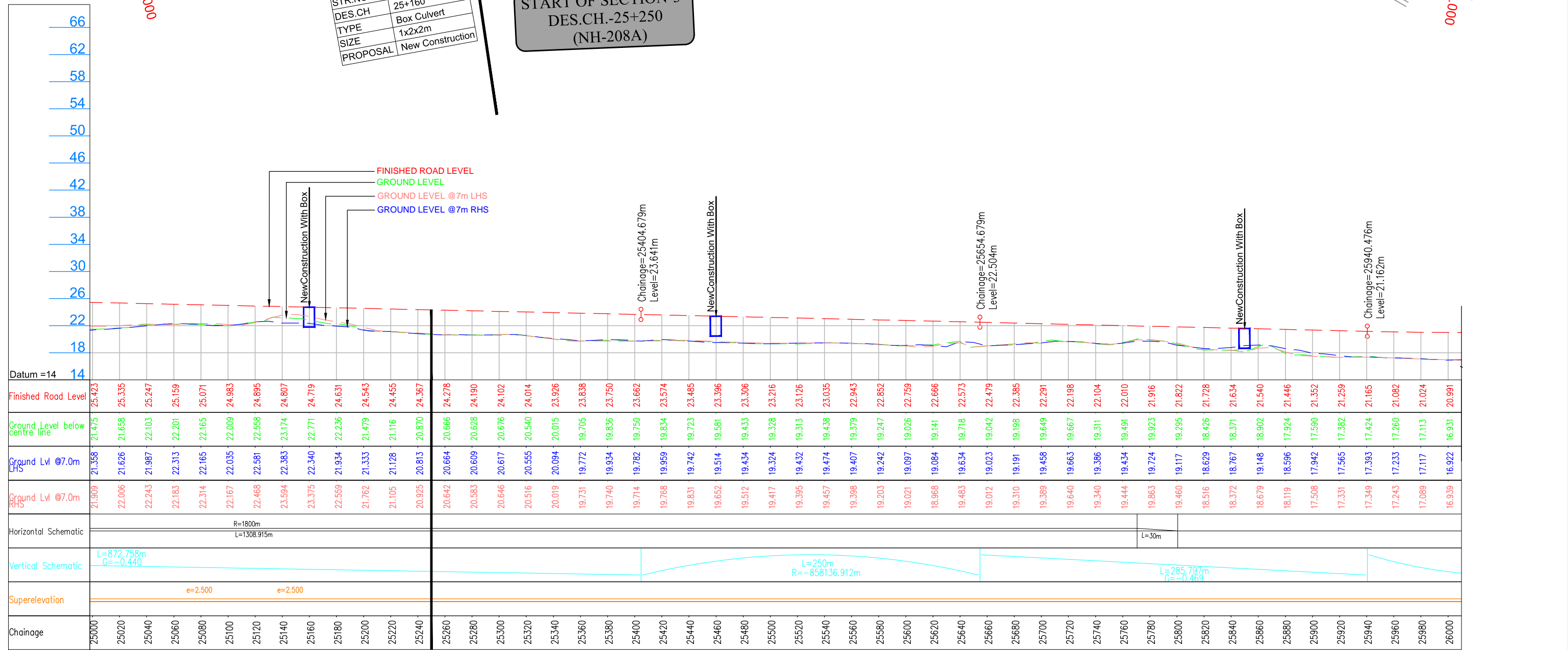
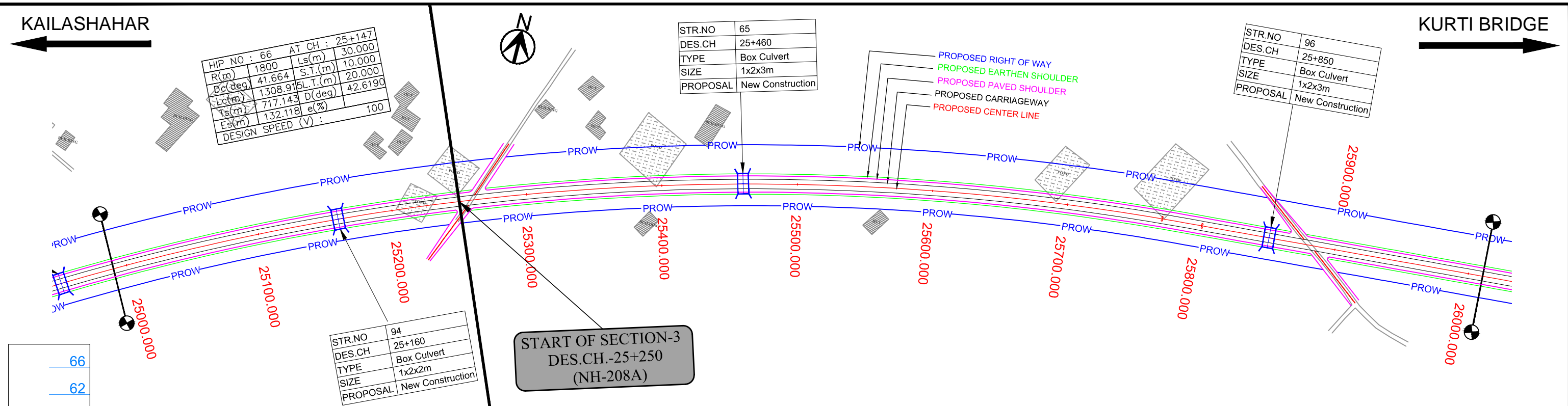


HIP NO : 66		AT CH : 25+147	
R(m)	1800	Ls(m)	30.000
Dc(deg)	41.664	S.T.(m)	10.000
Lc(m)	1308.91	5L.T.(m)	20.000
Ts(m)	717.143	D(deg)	42.6190
Es(m)	132.118	e(%)	
DESIGN SPEED (V) :		100	

STR.NO	65
DES.CH	25+460
TYPE	Box Culvert
SIZE	1x2x3m
PROPOSAL	New Construction

STR.NO	96
DES.CH	25+850
TYPE	Box Culvert
SIZE	1x2x3m
PROPOSAL	New Construction



— 222 —

CONSULTANCY SERVICES FOR FEASIBILITY STUDY, PREPARATION OF DETAILED PROJECT REPORT AND PROVIDING PRE-CONSTRUCTION SERVICES FOR UP-GRADATION OF SELECTED ROAD STRETCHES / CORRIDORS TO TWO LANE WITH PAVED SHOULDER NH CONFIGURATION UNDER BHARAT MALA PROJECT AND NATIONAL HIGHWAYS CONNECTIVITY TO BACKWARD AREAS/RELIGIOUS/TOURIST PLACES OF THE COUNTRY IN THE STATE OF TRIPURA.

KAILASHAHAR - KURTI BRIDGE SECTION-3



NATIONAL HIGHWAYS & INFRASTRUCTURE
DEVELOPMENT CORPORATION LTD

PLAN & PROFILE
DES.CH. 25+000 TO 26+000

Scale :- 1:2000

Drn	Dgn.	Appd
-----	------	------

Deepak	B.Mishra	B.S Pandey
--------	----------	------------

--	--



Technocrats Advisory Services Private Limited

in association with Vaishnavi Infratech Services P. Ltd
Flat No. 68, Ajanta Apartment, 36 I.P.Extension
Patparganj, Delhi-110092

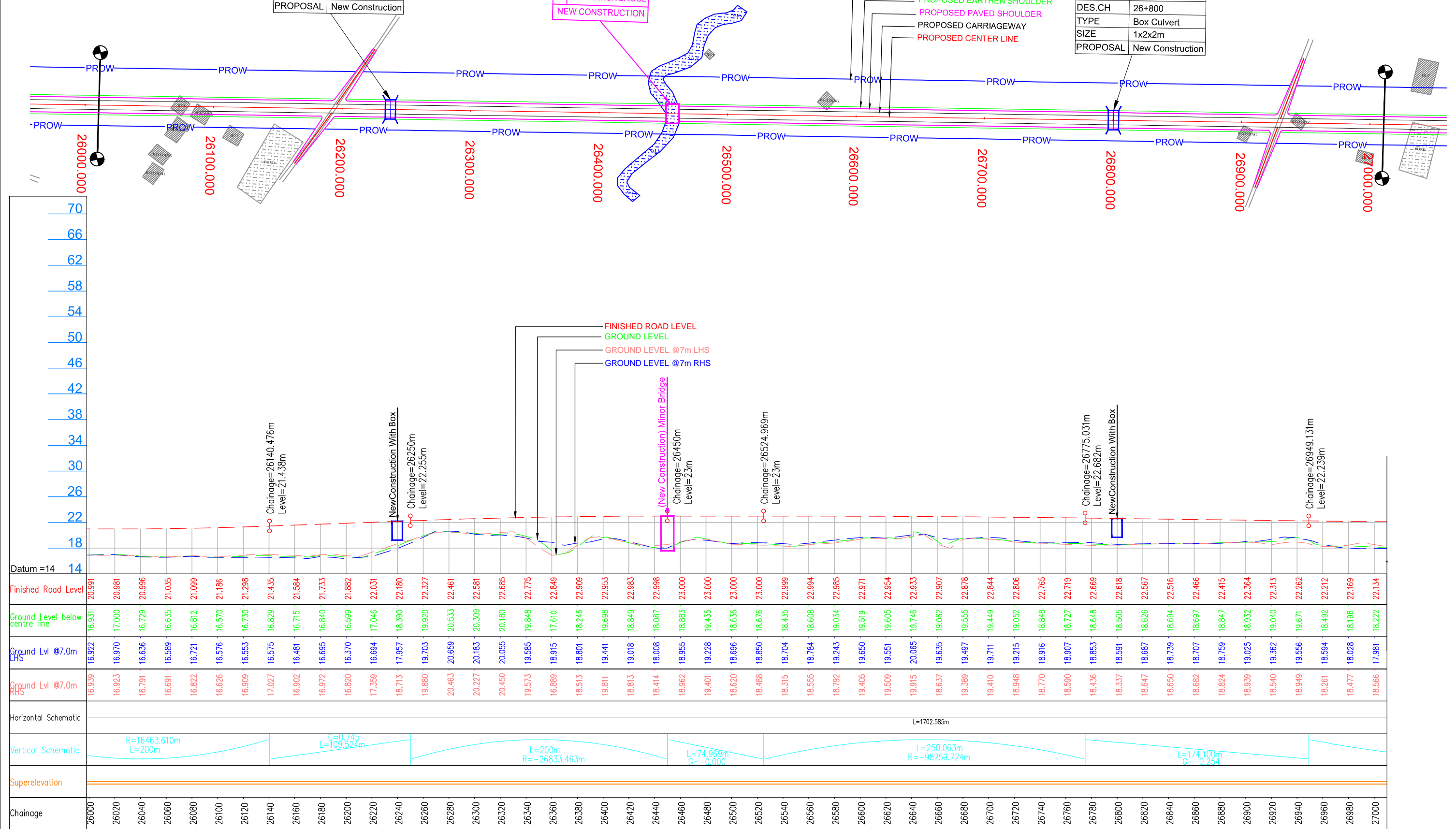
KAILASHAHAR

KURTI BRIDGE

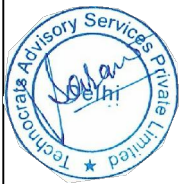
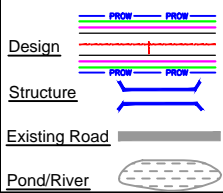
STR.NO	97
DES.CH	26+240
TYPE	Box Culvert
SIZE	1x2x3m
PROPOSAL	New Construction

DESIGN	STR NO.
	DES. CH.: 26+450
	1x10m MINOR BRIDGE
	NEW CONSTRUCTION

STR.NO	98
DES.CH	26+800
TYPE	Box Culvert
SIZE	1x2x2m
PROPOSAL	New Construction



LEGEND :



Project Title:

CONSULTANCY SERVICES FOR FEASIBILITY STUDY, PREPARATION OF DETAILED PROJECT REPORT AND PROVIDING PRE-CONSTRUCTION SERVICES FOR UP-GRADATION OF SELECTED ROAD STRETCHES / CORRIDORS TO TWO LANE WITH PAVED SHOULDER NH CONFIGURATION UNDER BHARAT MALA PROJECT AND NATIONAL HIGHWAYS CONNECTIVITY TO BACKWARD AREAS/RELIGIOUS/TOURIST PLACES OF THE COUNTRY IN THE STATE OF TRIPURA.

KAILASHAHAR - KURTI BRIDGE SECTION-3

CLIENT:



NATIONAL HIGHWAYS & INFRASTRUCTURE DEVELOPMENT CORPORATION LTD

Drawing Title:

PLAN & PROFILE
DES.CH. 26+000 TO 27+000

Drawing No. :-

TASPL/NHIDCL/DDPR/P&P

Sheet :

02 OF 12

Scale :-

1:2000

Drm

Dgn.

Appd

Date

Deepak

B.Mishra

B.S Pandey

DEC - 2019

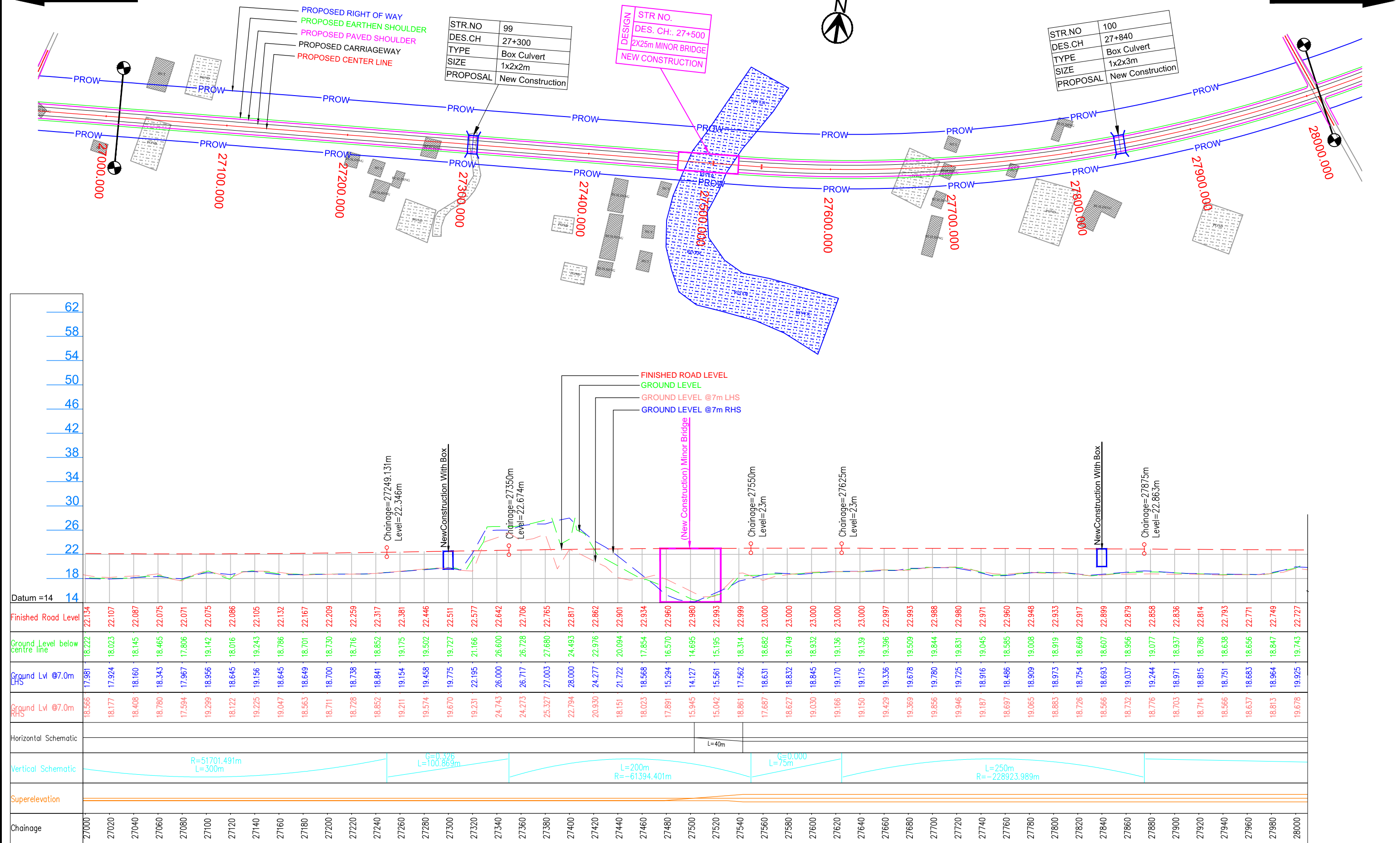
CONSULTANT:



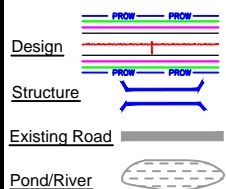
Technocrats Advisory Services Private Limited
in association with Vaishnavi Infratech Services P. Ltd
Flat No. 68, Ajanta Apartment, 36 I.P.Extension
Patparganj, Delhi-110092

KAILASHAHAR

KURTI BRIDGE



LEGEND :



Project Title:

CONSULTANCY SERVICES FOR FEASIBILITY STUDY, PREPARATION OF DETAILED PROJECT REPORT AND PROVIDING PRE-CONSTRUCTION SERVICES FOR UP-GRADATION OF SELECTED ROAD STRETCHES / CORRIDORS TO TWO LANE WITH PAVED SHOULDER NH CONFIGURATION UNDER BHARAT MALA PROJECT AND NATIONAL HIGHWAYS CONNECTIVITY TO BACKWARD AREAS/RELIGIOUS/TOURIST PLACES OF THE COUNTRY IN THE STATE OF TRIPURA.

KAILASHAHAR - KURTI BRIDGE SECTION-3

CLIENT:



NATIONAL HIGHWAYS & INFRASTRUCTURE
DEVELOPMENT CORPORATION LTD

Drawing Title:

PLAN & PROFILE
DES.CH. 27+000 TO 28+000

Drawing No. :-

TASPL/NHIDCL/DDPR/P&P

Sheet :

03 OF 12

Scale :-

1:2000

Drm

Dgn.

Appd

Date

Deepak

B.Mishra

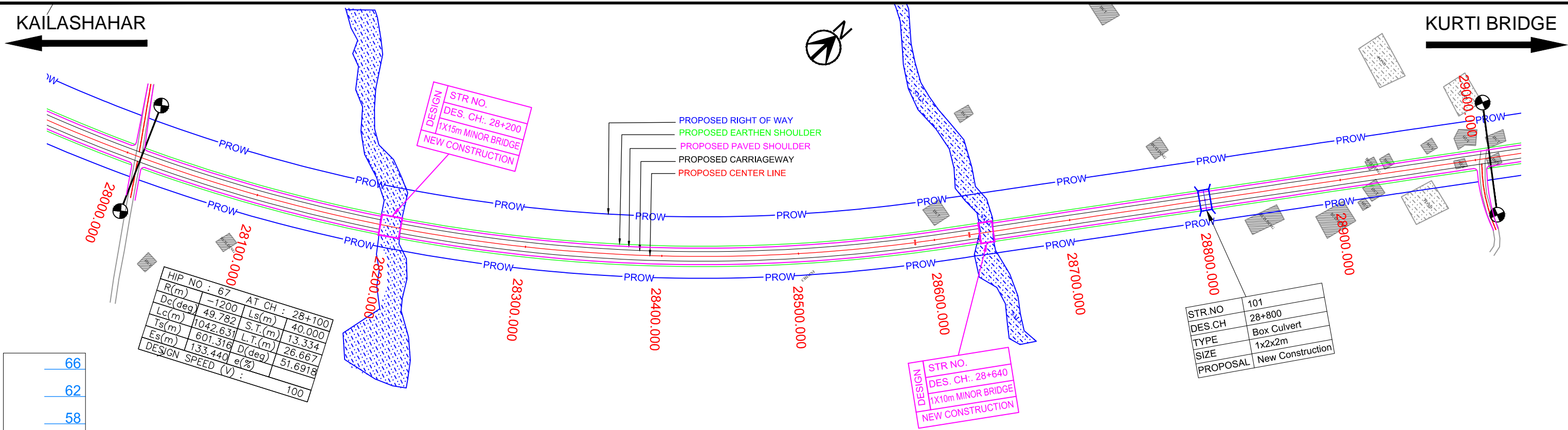
B.S Pandey

DEC - 2019

CONSULTANT:

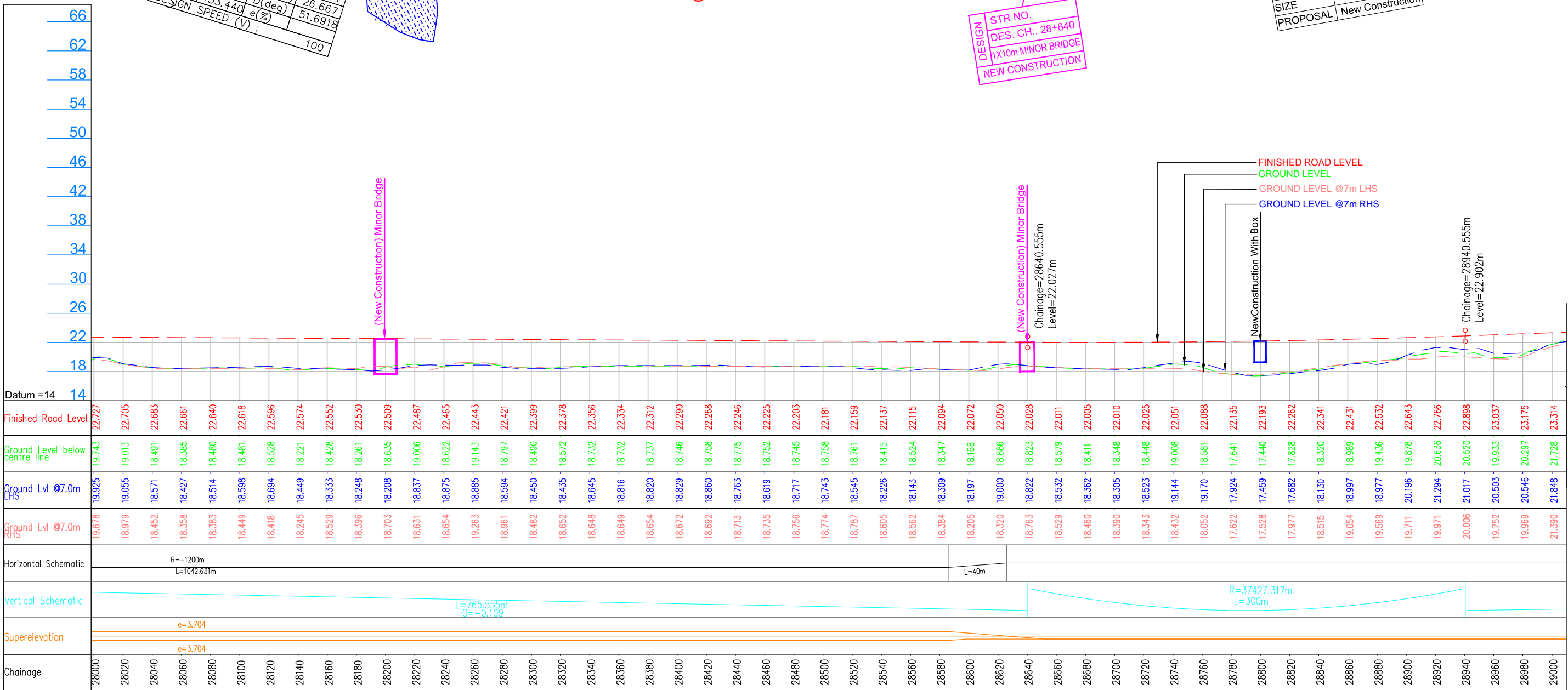


Technocrats Advisory Services Private Limited
in association with Vaishnavi Infratech Services P. Ltd
Flat No. 68, Ajanta Apartment, 36 I.P.Extension
Patparganj, Delhi-110092



HIP NO : 67		AT CH : 28+100	
R(m)	-1200	Ls(m)	40.000
Dc(deg)	49.782	S.T.(m)	13.334
Lc(m)	1042.631	L.T.(m)	26.667
Ts(m)	601.316	D(deg)	51.6918
Es(m)	133.440	e(%)	
DESIGN SPEED (V) :	100		

STR.NO	101
DES.CH	28+800
TYPE	Box Culvert
SIZE	1x2x2m
PROPOSAL	New Construction



LEGEND :

Design: PROW

Structure: PROPOSED EARTHEN SHOULDER

Existing Road: PROPOSED PAVED SHOULDER

Pond/River: PROPOSED CARRIAGEWAY

PROPOSED CENTER LINE

Project Title:

CONSULTANCY SERVICES FOR FEASIBILITY STUDY, PREPARATION OF DETAILED PROJECT REPORT AND PROVIDING PRE-CONSTRUCTION SERVICES FOR UP-GRADATION OF SELECTED ROAD STRETCHES / CORRIDORS TO TWO LANE WITH PAVED SHOULDER NH CONFIGURATION UNDER BHARAT MALA PROJECT AND NATIONAL HIGHWAYS CONNECTIVITY TO BACKWARD AREAS/RELIGIOUS/TOURIST PLACES OF THE COUNTRY IN THE STATE OF TRIPURA.

KAILASHAHAR - KURTI BRIDGE SECTION-3

CLIENT:

NATIONAL HIGHWAYS & INFRASTRUCTURE DEVELOPMENT CORPORATION LTD

Drawing Title: PLAN & PROFILE
DES.CH. 28+000 TO 29+000

Drawing No. :- TASPL/NHIDCL/DDPR/P&P

Scale :- 1:2000

Drn	Dgn.	Appd
Deepak	B.Mishra	B.S Pandey

Sheet : 04 OF 12

Date DEC - 2019

CONSULTANT:

Technocrats Advisory Services Private Limited
in association with Vaishnavi Infratech Services P. Ltd
Flat No. 68, Ajanta Apartment, 36 I.P.Extension
Patparganj, Delhi-110092

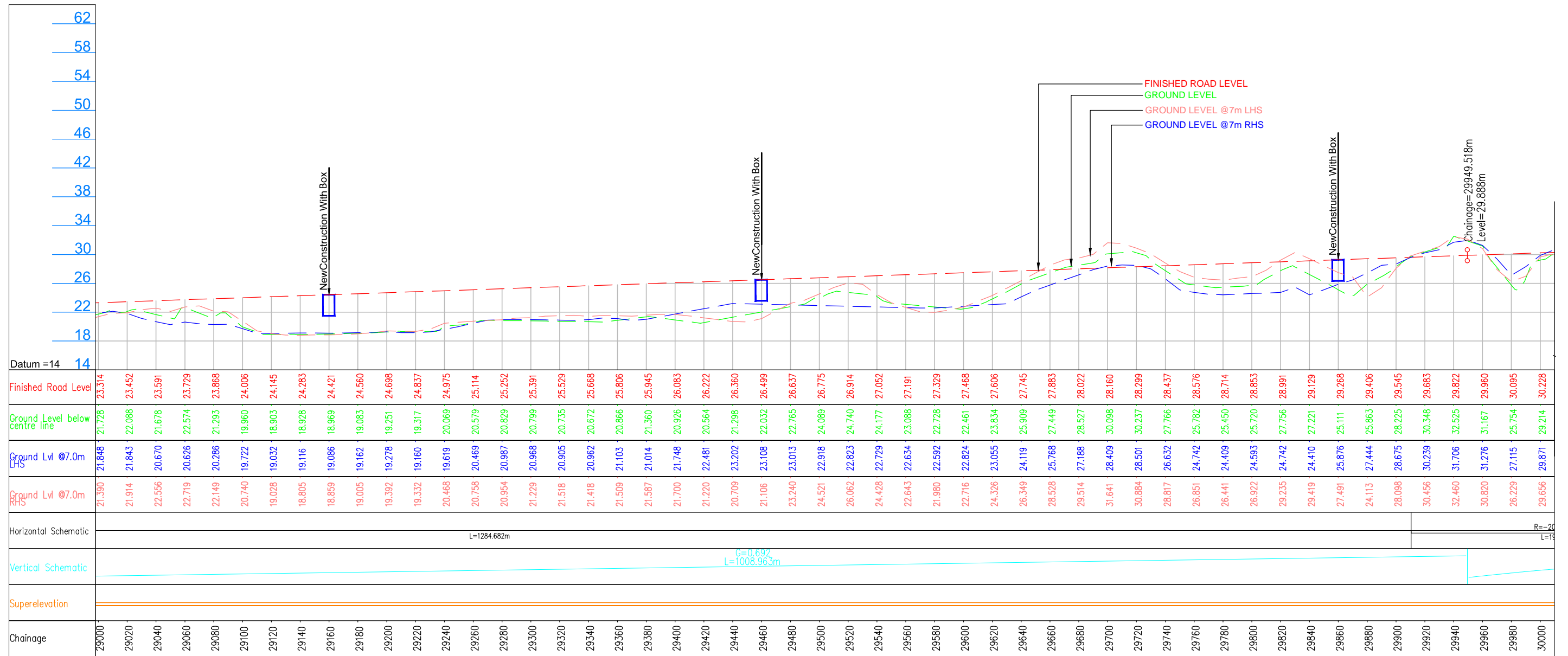
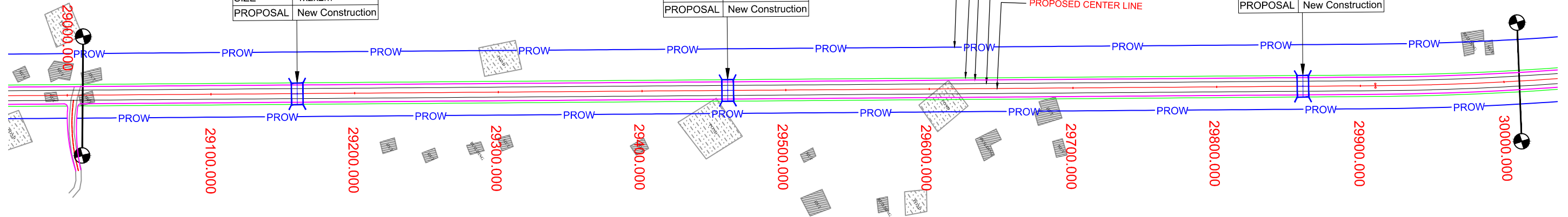
KAILASHAHAR

KURTI BRIDGE

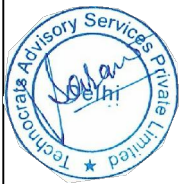
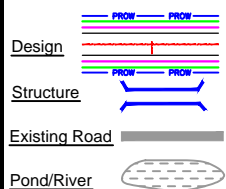
STR.NO	102
DES.CH	29+160
TYPE	Box Culvert
SIZE	1x2x2m
PROPOSAL	New Construction

STR.NO	103
DES.CH	29+460
TYPE	Box Culvert
SIZE	1x2x2m
PROPOSAL	New Construction

STR.NO	104
DES.CH	29+860
TYPE	Box Culvert
SIZE	1x2x3m
PROPOSAL	New Construction



LEGEND :



Project Title:

CONSULTANCY SERVICES FOR FEASIBILITY STUDY, PREPARATION OF DETAILED PROJECT REPORT AND PROVIDING PRE-CONSTRUCTION SERVICES FOR UP-GRADATION OF SELECTED ROAD STRETCHES / CORRIDORS TO TWO LANE WITH PAVED SHOULDER NH CONFIGURATION UNDER BHARAT MALA PROJECT AND NATIONAL HIGHWAYS CONNECTIVITY TO BACKWARD AREAS/RELIGIOUS/TOURIST PLACES OF THE COUNTRY IN THE STATE OF TRIPURA.

KAILASHAHAR - KURTI BRIDGE SECTION-3

CLIENT:



NATIONAL HIGHWAYS & INFRASTRUCTURE
DEVELOPMENT CORPORATION LTD

Drawing Title:

PLAN & PROFILE
DES.CH. 29+000 TO 30+000

Drawing No. :-

TASPL/NHIDCL/DDPR/P&P

Sheet :

05 OF 12

Scale :-

1:2000

Drm

Dgn.

Appd

Deepak

B.Mishra

B.S Pandey

Date

DEC - 2019

CONSULTANT:

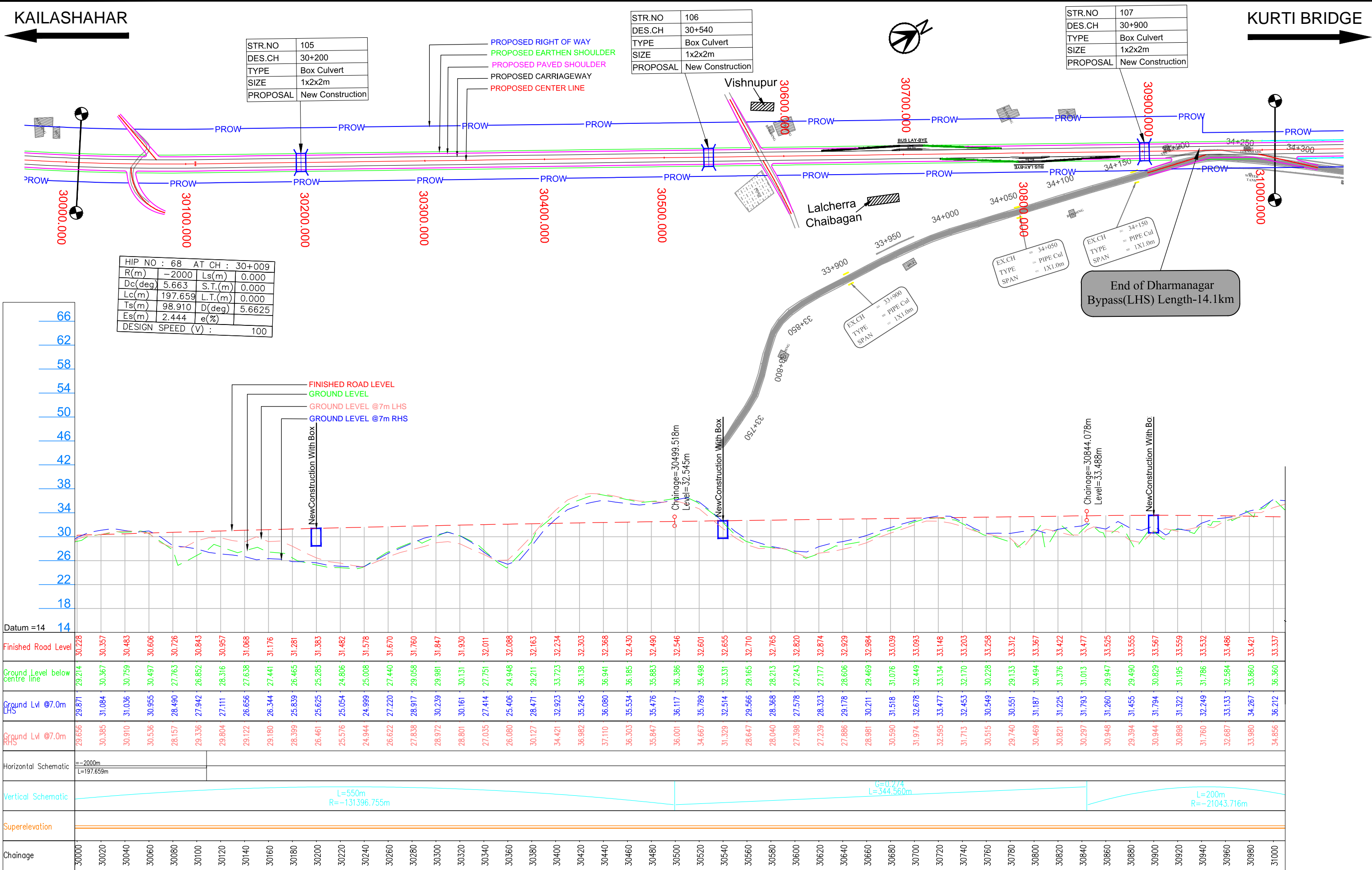


Technocrats Advisory Services Private Limited

in association with Vaishnavi Infratech Services P. Ltd

Flat No. 68, Ajanta Apartment, 36 I.P.Extension

Patparganj, Delhi-110092

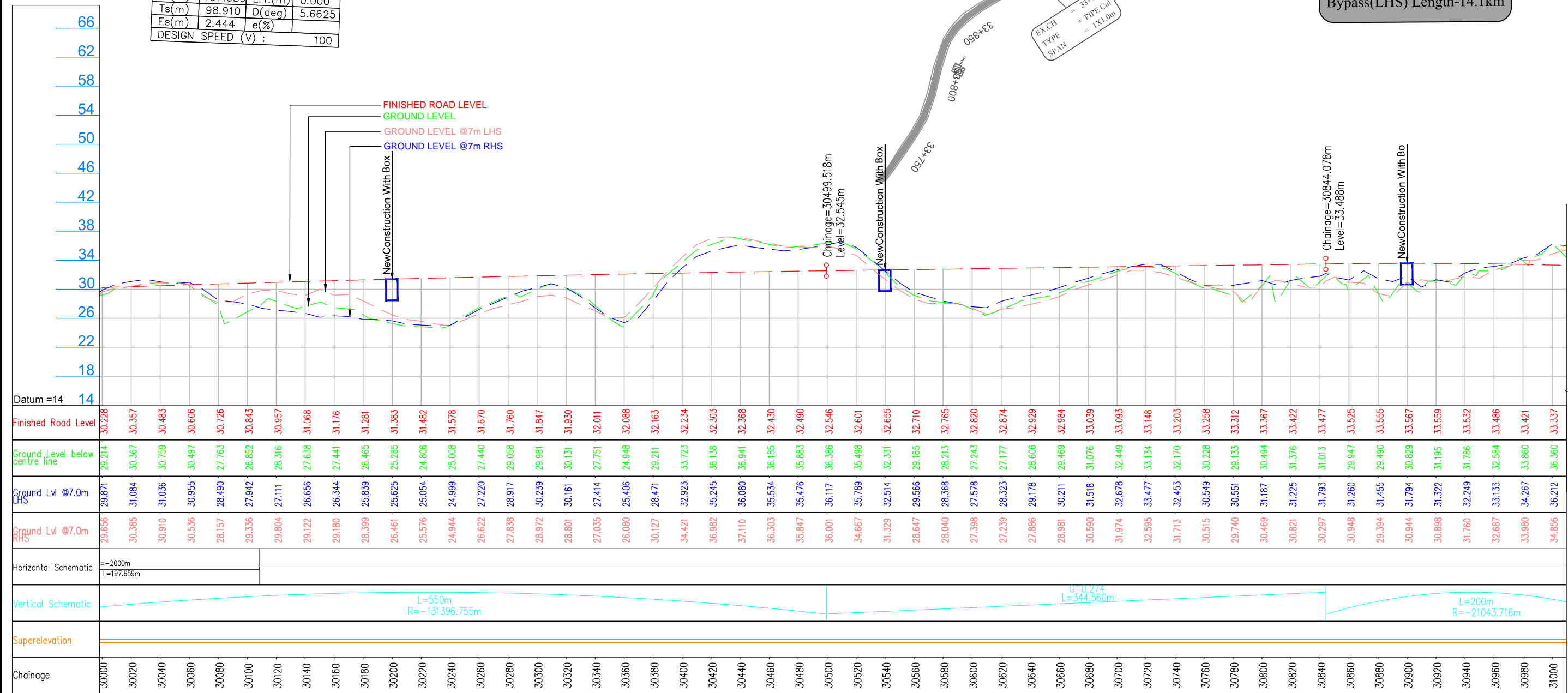


HIP NO : 68 AT CH : 30+009			
R(m)	-2000	Ls(m)	0.000
Dc(deg)	5.663	S.T.(m)	0.000
Lc(m)	197.659	L.T.(m)	0.000
Ts(m)	98.910	D(deg)	5.6625
Es(m)	2.444	e(%)	
DESIGN SPEED (V) : 100			

STR.NO	105
DES.CH	30+200
TYPE	Box Culvert
SIZE	1x2x2m
PROPOSAL	New Construction

STR.NO	106
DES.CH	30+540
TYPE	Box Culvert
SIZE	1x2x2m
PROPOSAL	New Construction

STR.NO	107
DES.CH	30+900
TYPE	Box Culvert
SIZE	1x2x2m
PROPOSAL	New Construction



LEGEND :

Design: PROW, PROW, PROW, PROW

Structure: PROW, PROW

Existing Road: PROW, PROW

Pond/River: PROW, PROW

Project Title:

CONSULTANCY SERVICES FOR FEASIBILITY STUDY, PREPARATION OF DETAILED PROJECT REPORT AND PROVIDING PRE-CONSTRUCTION SERVICES FOR UP-GRADATION OF SELECTED ROAD STRETCHES / CORRIDORS TO TWO LANE WITH PAVED SHOULDER NH CONFIGURATION UNDER BHARAT MALA PROJECT AND NATIONAL HIGHWAYS CONNECTIVITY TO BACKWARD AREAS/RELIGIOUS/TOURIST PLACES OF THE COUNTRY IN THE STATE OF TRIPURA.

KAILASHAHAR - KURTI BRIDGE SECTION-3

CLIENT:

NATIONAL HIGHWAYS & INFRASTRUCTURE DEVELOPMENT CORPORATION LTD

Drawing Title:

PLAN & PROFILE
DES.CH. 30+000 TO 31+000

Drawing No. :- TASPL/NHIDCL/DDPR/P&P

Scale :- 1:2000

Drn Deepak **Dgn.** B.Mishra **Appd** B.S Pandey

Sheet : 06 OF 12

Date DEC - 2019

CONSULTANT:

TASPL

Technocrats Advisory Services Private Limited

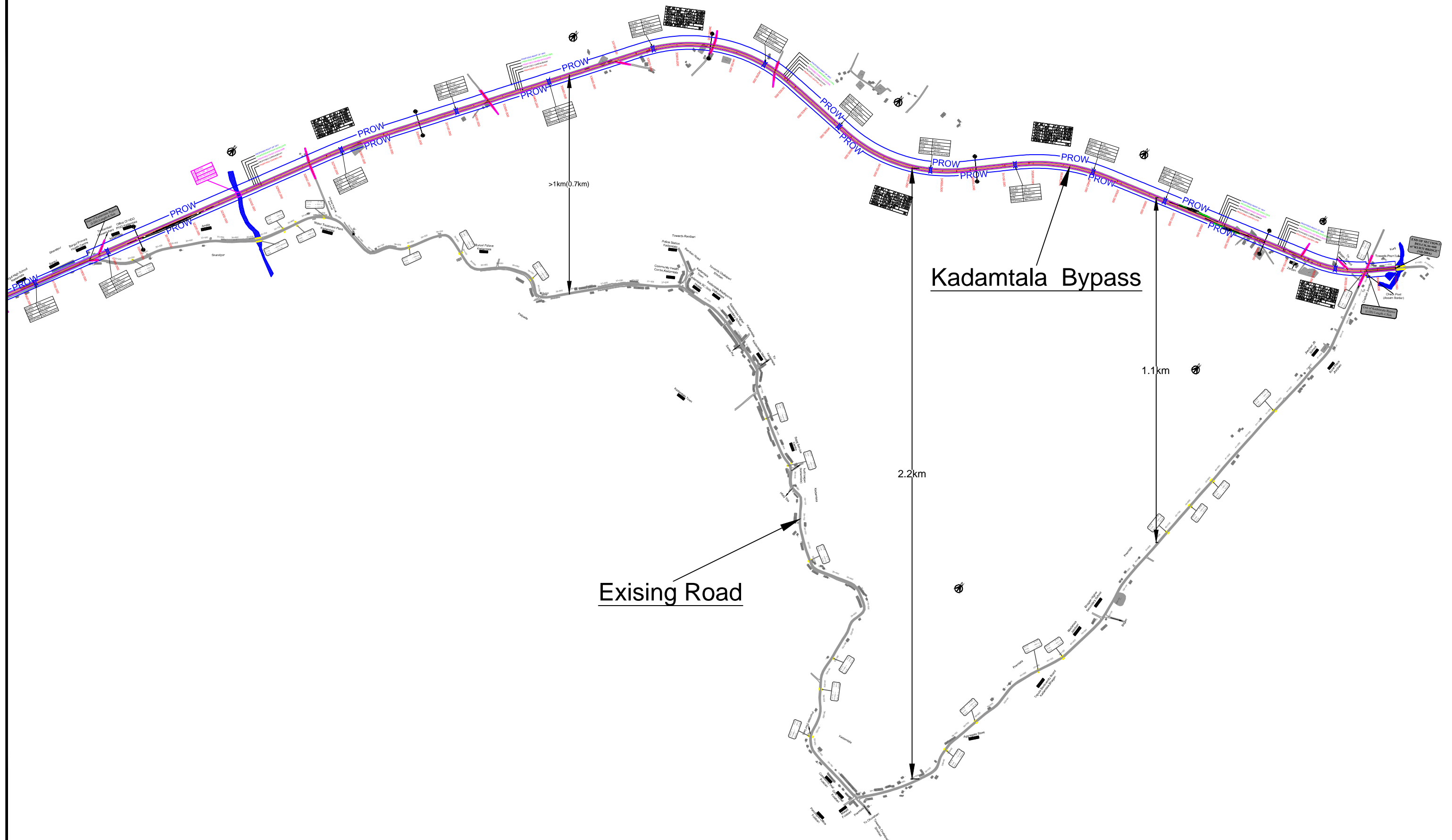
in association with Vaishnavi Infratech Services P. Ltd

Flat No. 68, Ajanta Apartment, 36 I.P.Extension Patparganj, Delhi-110092


KAILASHAHAR

Kadamtala Bypass LHS (Length - 4.5km)

KURTI BRIDGE



<p>LEGEND :</p> <p>Design: </p> <p>Structure: </p> <p>Existing Road: </p> <p>Pond/River: </p> <p></p>	<p>Project Title:</p> <p>CONSULTANCY SERVICES FOR FEASIBILITY STUDY, PREPARATION OF DETAILED PROJECT REPORT AND PROVIDING PRE-CONSTRUCTION SERVICES FOR UP-GRADATION OF SELECTED ROAD STRETCHES / CORRIDORS TO TWO LANE WITH PAVED SHOULDER NH CONFIGURATION UNDER BHARAT MALA PROJECT AND NATIONAL HIGHWAYS CONNECTIVITY TO BACKWARD AREAS/RELIGIOUS/TOURIST PLACES OF THE COUNTRY IN THE STATE OF TRIPURA.</p> <p>KAILASHAHAR - KURTI BRIDGE SECTION-3</p>	<p>CLIENT:</p> <p></p> <p>NATIONAL HIGHWAYS & INFRASTRUCTURE DEVELOPMENT CORPORATION LTD</p>	<p>Drawing Title:</p> <p>PLAN & PROFILE Kadamtala Bypass</p> <p>Drawing No. :- TASPL/NHIDCL/DDPR/P&P</p> <p>Scale :- 1:2000</p> <p>Drn: Deepak, Dgn: B.Mishra, Appd: B.S Pandey</p> <p>Sheet : BP2 OF 12</p> <p>Date: DEC - 2019</p>	<p>CONSULTANT:</p> <p></p> <p>Technocrats Advisory Services Private Limited</p> <p>in association with Vaishnavi Infratech Services P. Ltd</p> <p>Flat No. 68, Ajanta Apartment, 36 I.P.Extension Patparganj, Delhi-110092</p>
--	--	---	---	---



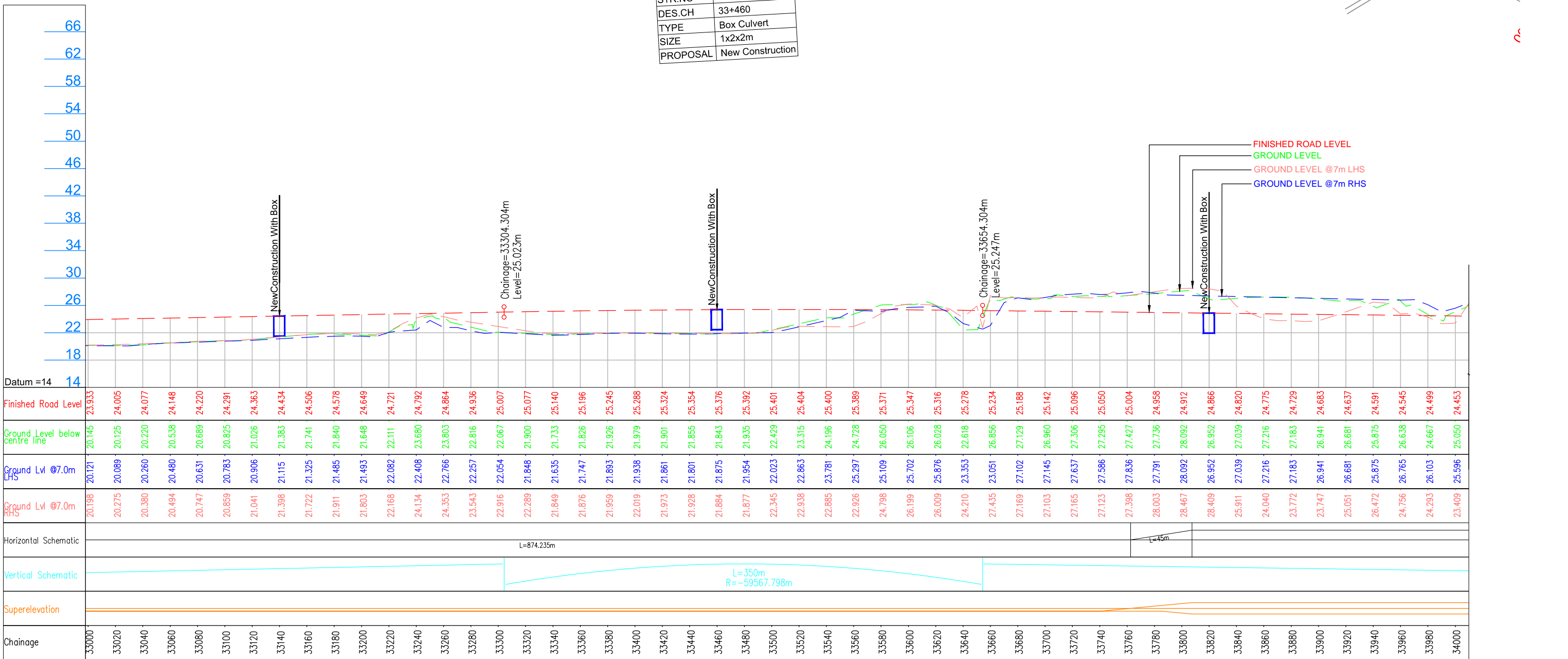
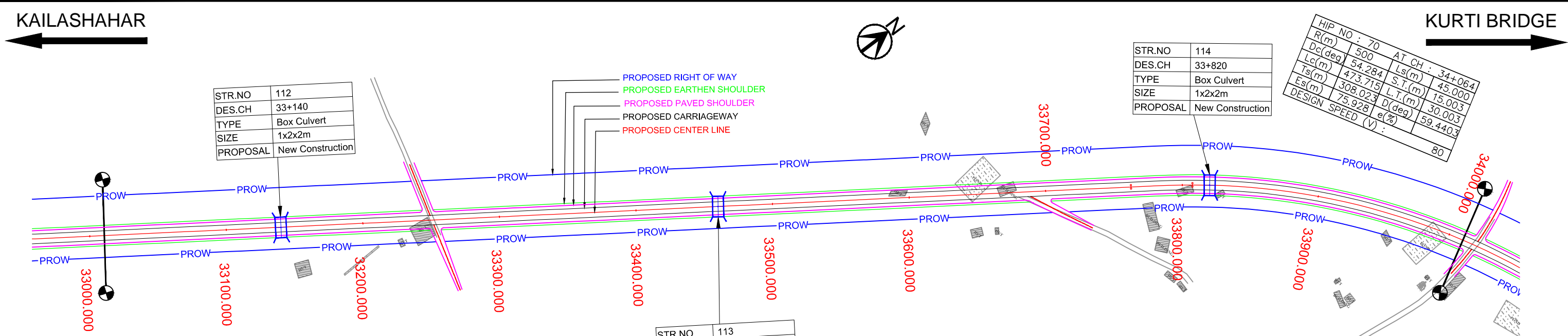
kadamtala **BROW**

35+650 35+700 35+750 35+800 35+850

FINISHED ROAD LEVEL

42

LEGEND :		Project Title:	CLIENT:	Drawing Title:	CONSULTANT:
----------	---	----------------	---------	----------------	-------------



LEGEND :

Design: PROW, PROW, PROW, PROW

Structure: PROW, PROW

Existing Road: PROW, PROW

Pond/River: PROW, PROW

Project Title:

CONSULTANCY SERVICES FOR FEASIBILITY STUDY, PREPARATION OF DETAILED PROJECT REPORT AND PROVIDING PRE-CONSTRUCTION SERVICES FOR UP-GRADATION OF SELECTED ROAD STRETCHES / CORRIDORS TO TWO LANE WITH PAVED SHOULDER NH CONFIGURATION UNDER BHARAT MALA PROJECT AND NATIONAL HIGHWAYS CONNECTIVITY TO BACKWARD AREAS/RELIGIOUS/TOURIST PLACES OF THE COUNTRY IN THE STATE OF TRIPURA.

KAILASHAHAR - KURTI BRIDGE SECTION-3

CLIENT:

NATIONAL HIGHWAYS & INFRASTRUCTURE DEVELOPMENT CORPORATION LTD

Drawing Title:

PLAN & PROFILE

Drawing No. :-

TASPL/NHIDCL/DDPR/P&P

Scale :-

1:2000

Sheet :

09 OF 12

Date

DEC - 2019

CONSULTANT:

TASPL

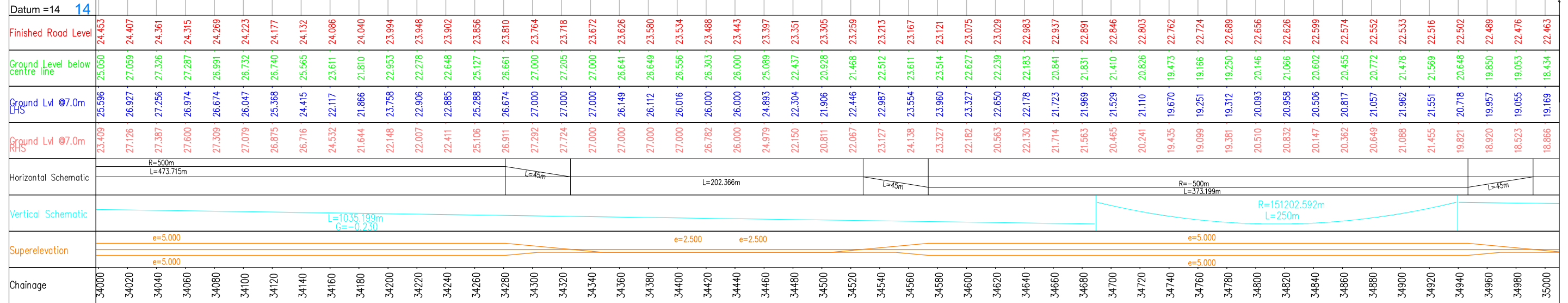
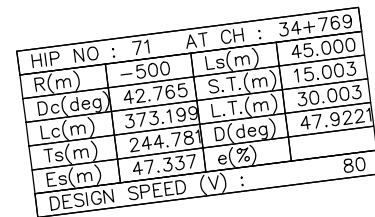
Technocrats Advisory Services Private Limited

in association with Vaishnavi Infratech Services P. Ltd

Flat No. 68, Ajanta Apartment, 36 I.P.Extension

Patparganj, Delhi-110092

STR.NO	117
DES.CH	34+860
TYPE	Box Culvert
SIZE	1x2x2m
PROPOSAL	New Construction



CONSULTANCY SERVICES FOR FEASIBILITY STUDY, PREPARATION OF DETAILED PROJECT REPORT AND PROVIDING PRE-CONSTRUCTION SERVICES FOR UP-GRADATION OF SELECTED ROAD STRETCHES / CORRIDORS TO TWO LANE WITH PAVED SHOULDER NH CONFIGURATION UNDER BHARAT MALA PROJECT AND NATIONAL HIGHWAYS CONNECTIVITY TO BACKWARD AREAS/RELIGIOUS/TOURIST PLACES OF THE COUNTRY IN THE STATE OF TRIPURA.



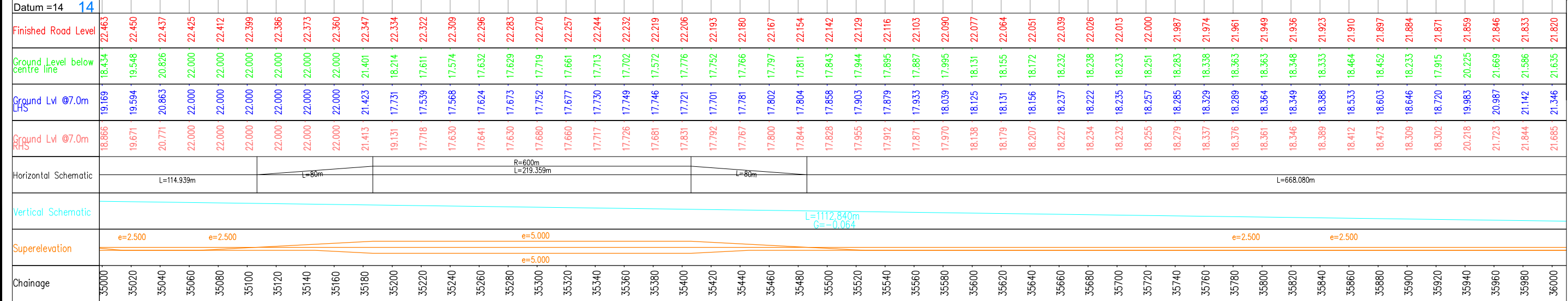
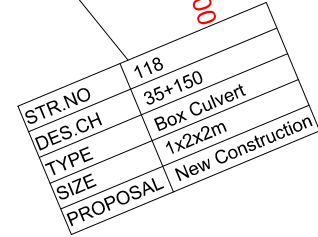
Date
DEC 2012


TASPL

Technocrats Advisory Services Private Limited
in association with Vaishnavi Infratech Services P. Ltd
Flat No. 68, Ajanta Apartment, 36 I.P.Extension
Patparganj, Delhi-110092



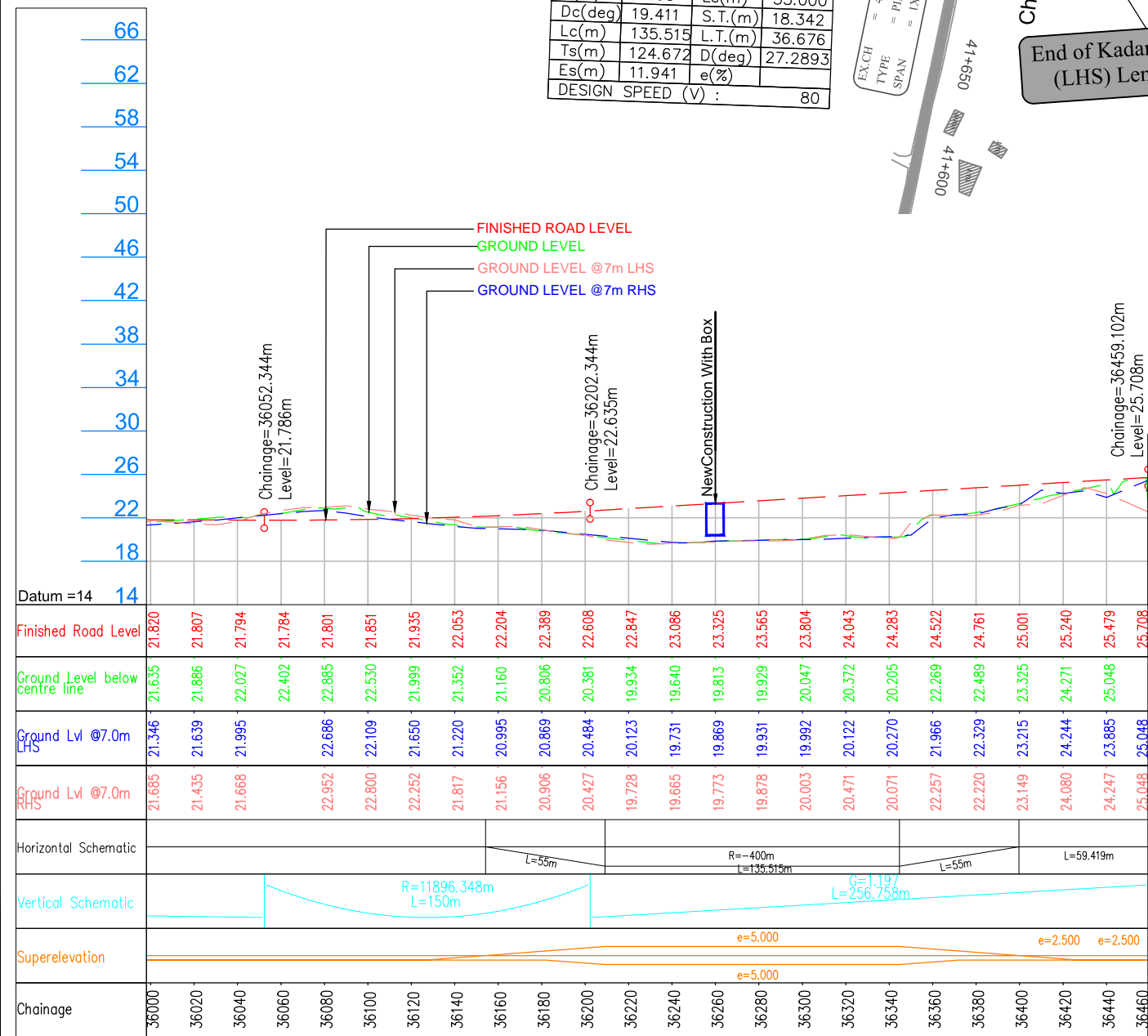
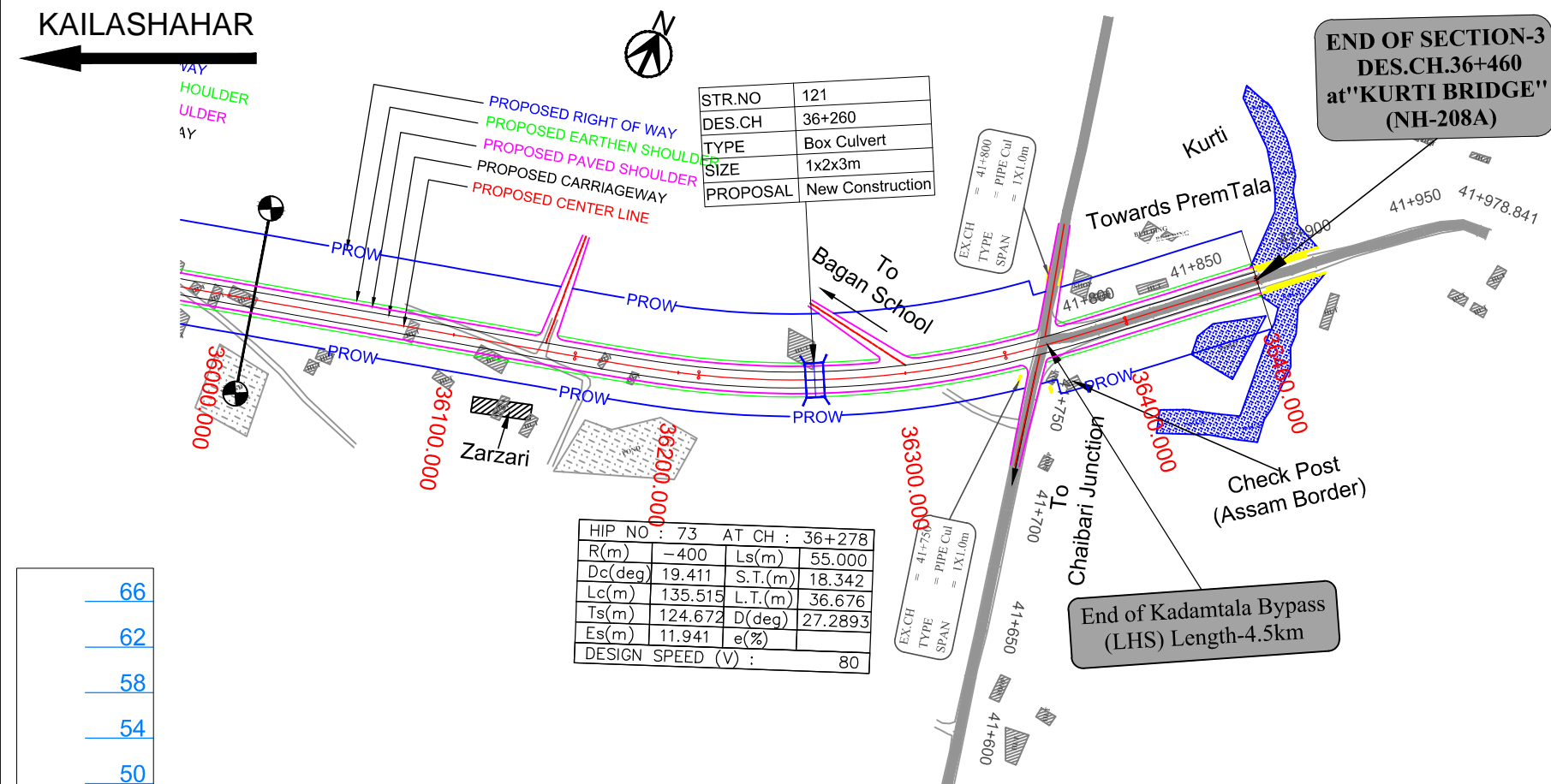
STR.NO	120
DES.CH	35+650
TYPE	Box Culvert
SIZE	1x2x3m
PROPOSAL	New Construction



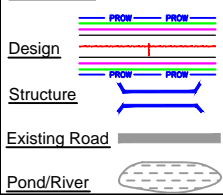
LEGEND : 	Project Title: <p>CONSULTANCY SERVICES FOR FEASIBILITY STUDY, PREPARATION OF DETAILED PROJECT REPORT AND PROVIDING PRE-CONSTRUCTION SERVICES FOR UP-GRADATION OF SELECTED ROAD STRETCHES / CORRIDORS TO TWO LANE WITH PAVED SHOULDER NH CONFIGURATION UNDER BHARAT MALA PROJECT AND NATIONAL HIGHWAYS CONNECTIVITY TO BACKWARD AREAS/RELIGIOUS/TOURIST PLACES OF THE COUNTRY IN THE <u>STATE OF TRIPURA</u>.</p> <p align="center"><u>KAILASHAHAR - KURTI BRIDGE SECTION-3</u></p>	CLIENT: <p align="center">NATIONAL HIGHWAYS & INFRASTRUCTURE DEVELOPMENT CORPORATION LTD</p>	Drawing Title: <p align="center">PLAN & PROFILE DES.CH. 35+000 TO 36+000</p> <table border="1"> <tr> <td>Drawing No. :-</td> <td>TASPL/NHIDCL/DDPR/P&P</td> <td>Sheet :</td> <td rowspan="2">11 OF 12</td> </tr> <tr> <td>Scale :-</td> <td>1:2000</td> <td></td> </tr> <tr> <td>Drn</td> <td>Dgn.</td> <td>Appd</td> <td>Date</td> </tr> <tr> <td>Deepak</td> <td>B.Mishra</td> <td>B.S Pandey</td> <td>DEC - 2019</td> </tr> </table>	Drawing No. :-	TASPL/NHIDCL/DDPR/P&P	Sheet :	11 OF 12	Scale :-	1:2000		Drn	Dgn.	Appd	Date	Deepak	B.Mishra	B.S Pandey	DEC - 2019	CONSULTANT: <p align="center">Technocrats Advisory Services Private Limited in association with Vaishnavi Infratech Services P. Ltd Flat No. 68, Ajanta Apartment, 36 I.P.Extension Patparganj, Delhi-110092</p>
Drawing No. :-	TASPL/NHIDCL/DDPR/P&P	Sheet :	11 OF 12																
Scale :-	1:2000																		
Drn	Dgn.	Appd	Date																
Deepak	B.Mishra	B.S Pandey	DEC - 2019																

KAILASHAHAR

KURTI BRIDGE



LEGEND :



Project Title:

CONSULTANCY SERVICES FOR FEASIBILITY STUDY, PREPARATION OF DETAILED PROJECT REPORT AND PROVIDING PRE-CONSTRUCTION SERVICES FOR UP-GRADATION OF SELECTED ROAD STRETCHES / CORRIDORS TO TWO LANE WITH PAVED SHOULDER NH CONFIGURATION UNDER BHARAT MALA PROJECT AND NATIONAL HIGHWAYS CONNECTIVITY TO BACKWARD AREAS/RELIGIOUS/TOURIST PLACES OF THE COUNTRY IN THE STATE OF TRIPURA.

KAILASHAHAR - KURTI BRIDGE SECTION-3

CLIENT:



NATIONAL HIGHWAYS & INFRASTRUCTURE
DEVELOPMENT CORPORATION LTD

Drawing Title:

PLAN & PROFILE
DES.CH. 36+000 TO 36+460

Drawing No. :-

TASPL/NHIDCL/DDPR/P&P

Sheet :

12 OF 12

Scale :-

1:2000

Drm

Dgn.

Appd

Deepak

B.Mishra

B.S Pandey

Date

DEC - 2019

CONSULTANT:



Technocrats Advisory Services Private Limited
in association with Vaishnavi Infratech Services P. Ltd
Flat No. 68, Ajanta Apartment, 36 I.P.Extension
Patparganj, Delhi-110092